

The Archaeology of Neolithic Dairying



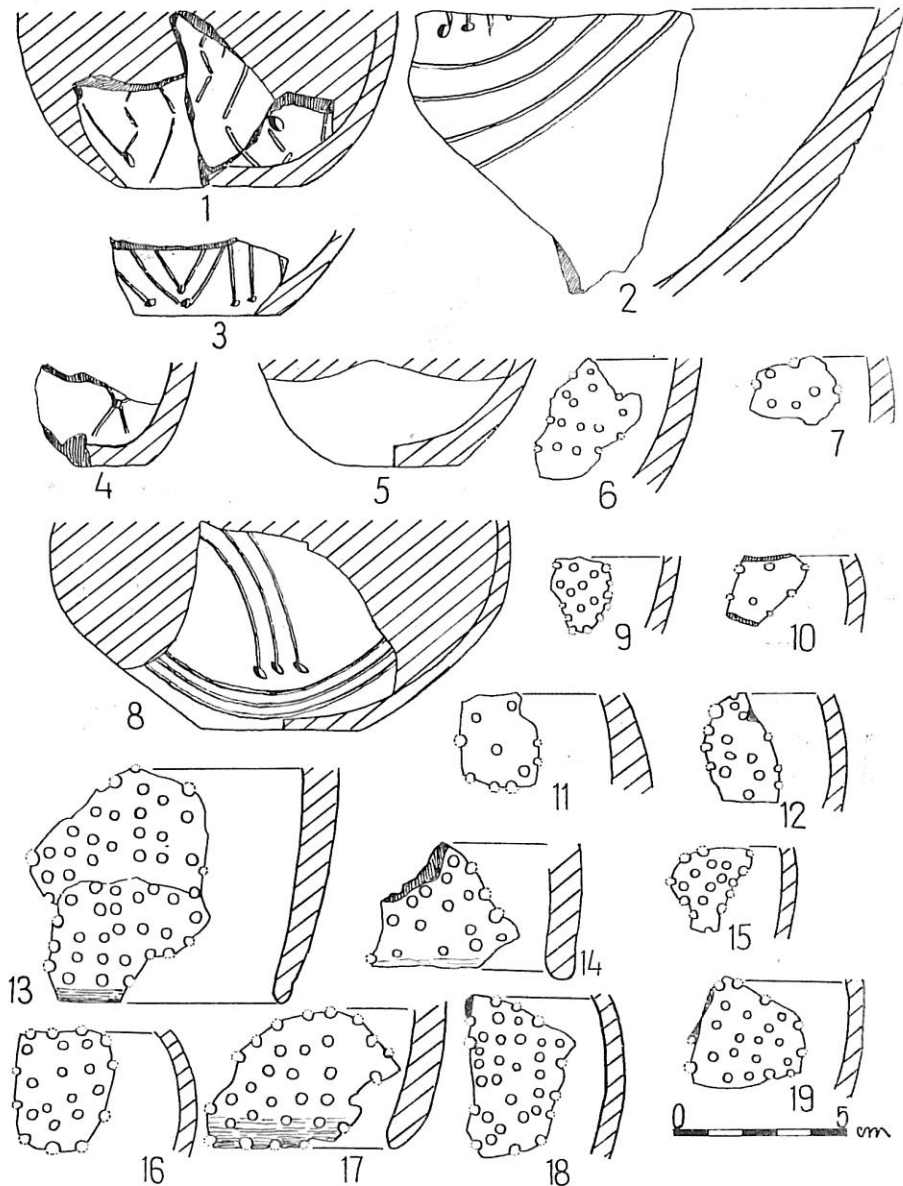
Peter Bogucki
Princeton University

LeCHE 2012
Amsterdam

School of
Engineering
and Applied
Science

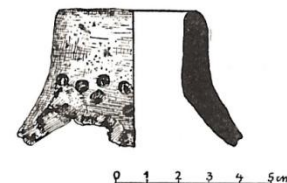


PRINCETON

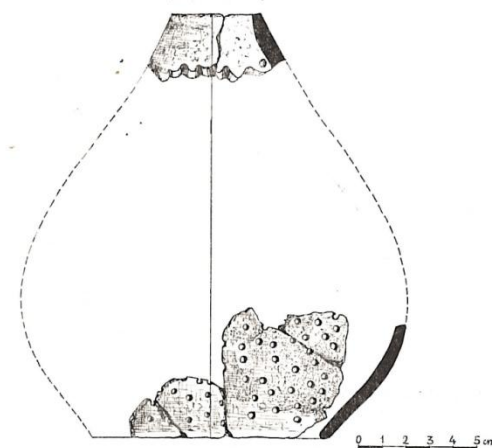


Brześć Kujawski, st. 4. Odc. 2, w. II (2); odc. 3 i 14, w. II (6, 7), w. kult. (1); odc. 9, grób V (9); odc. 19, w. III (3); odc. 51, w. I-II, (4); odc. 96, w. II (5); odc. 152, w. kult. (1); odc. 250, w. kult. (8), odc. 251, w. II (12); odc. 385, w. II (16); odc. 451, w. kult. (17); odc. 451, rów (15); odc. 452, w. kult. (18, 19); odc. 460, w. kult. (14), j. 137 (13), grób XXXIV (10).
Pottery from site 4.

XVI, 6; 2 — grupy BC, z tych 1 — z ukośną karbowaną listewką — Tabl. XVI, 2; 3 — grupy C — z małymi pojedynczymi guzkami i 3 — grupy D — z krótkimi listewkami, zapewne poziomymi.



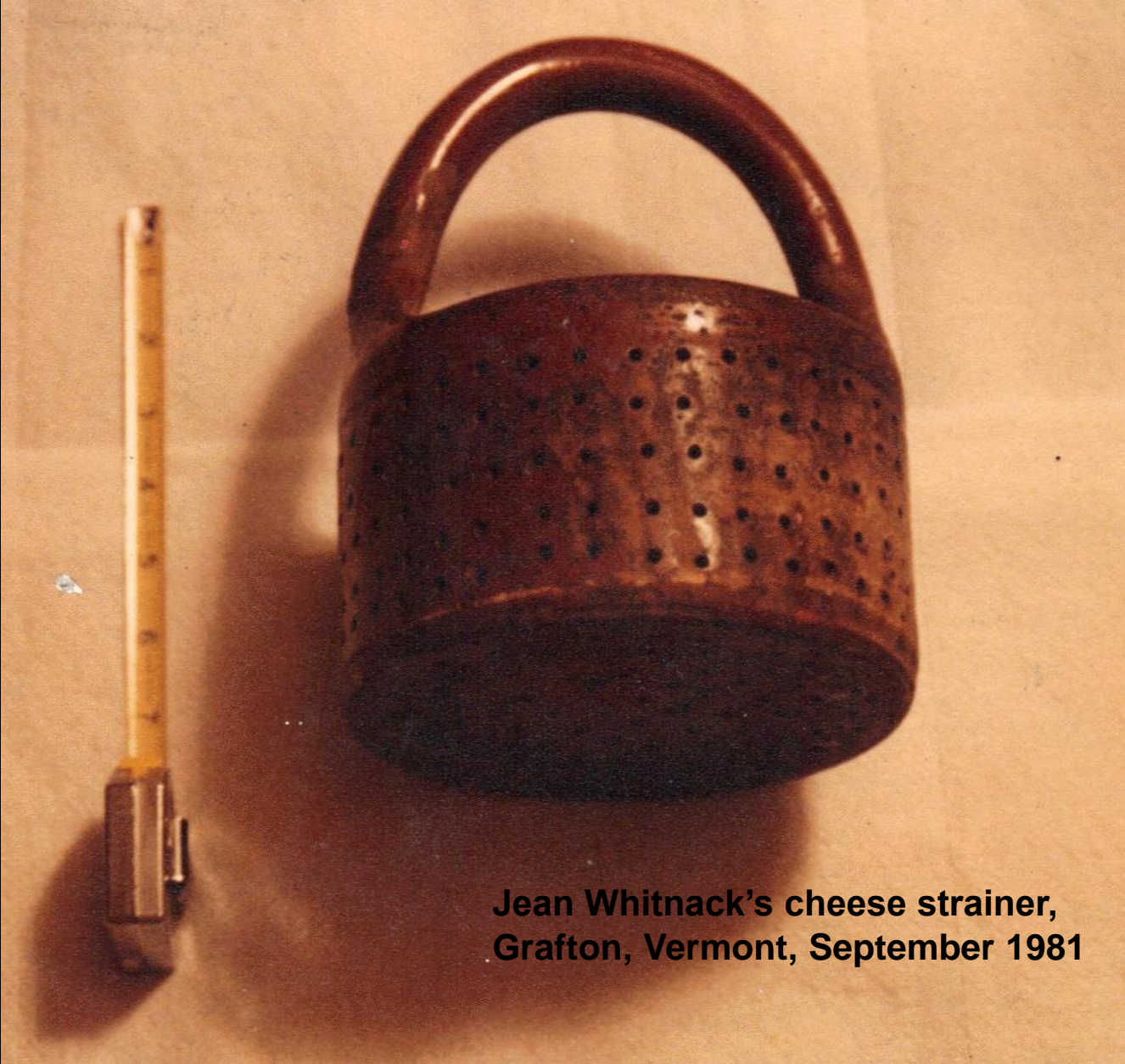
Ryc. 6. Radziejów Kujawski, st. 5. Jama 4. Fragment naczyńa sitowatego
Fig. 6. Radziejów Kujawski site 5. Pit 4. Fragment of a sieve-like vessel



Ryc. 7. Radziejów Kujawski, st. 5. Jama 4. Rekonstrukcja naczyńa sitowatego
Fig. 7. Radziejów Kujawski site 5. Pit 4. Reconstruction of the sieve-like vessel

Interpretation of sieve sherds from Radziejów as fragments of a brazier by Gabałówna 1963, per Jazdzewski's opinion, but described in text as a "sieve"

Sieves from Brześć Kujawski 4 excavated by Jazdzewski in 1933-39, as shown in Grygiel 1976



**Jean Whitnack's cheese strainer,
Grafton, Vermont, September 1981**

STUDIES IN ARCHEOLOGY

Sarunas Milisauskas

*European
Prehistory*

ACADEMIC PRESS, INC. *A Subsidiary of Harcourt Brace Jovanovich, Publishers*





© Roger Fehres





11/3/82

Dear Peter,

I cannot recall the presence of Linear Pottery sieve sherds at any site in southeastern Poland (Małopolska). What were the Early Neolithic people doing with these pots in Kuyavia? Perhaps they were using them for production of dairy products.

I am working on the Olszanica and Bronocice data.

Letter from Sarunas Milisauskas to Peter Bogucki, November 3, 1982



Letter from Andrew Sherratt to Peter Bogucki, 27 January 1983

DEPARTMENT OF ANTIQUITIES
ASHMOLEAN MUSEUM
OXFORD OX1 2PH
Telephone Oxford 512651 (STD 0865)

January 27th

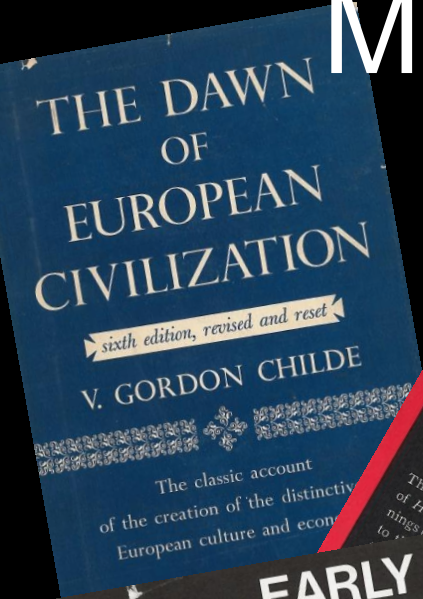
Dear Peter

Thanks for the copy of your article. There is really no problem in reconciling it with my views, which have now been modified to recognise the likelihood of cheese production (or even lactose tolerance?) in European Neolithic populations - see the Flatz & Rottshaus reference. I enclose some pages of a short paper to come out in the next World Archaeology (I hope!). The real Mesolith is still in

the 3rd millennium^{bc} when the plough and more extensive types of cultivation and clearance raise the ceiling on animal numbers to make a large scale pastoral sector; but it would certainly make sense for small, semi-isolated pioneer populations to have milk rather than having to slaughter their animals so frequently.

I think milk-use may be very localised, however: Sahelardis' work has sharp local contrasts in age structure between contemporary sites. A similar pattern may obtain even in EN Greece, where John Watson tells me that the Servia cattle have a high proportion of mature females, while at Rodromos further south Paul Halstead seems to have a young meat pattern.

Milk? What Neolithic milk?



STUDIES IN ARCHEOLOGY

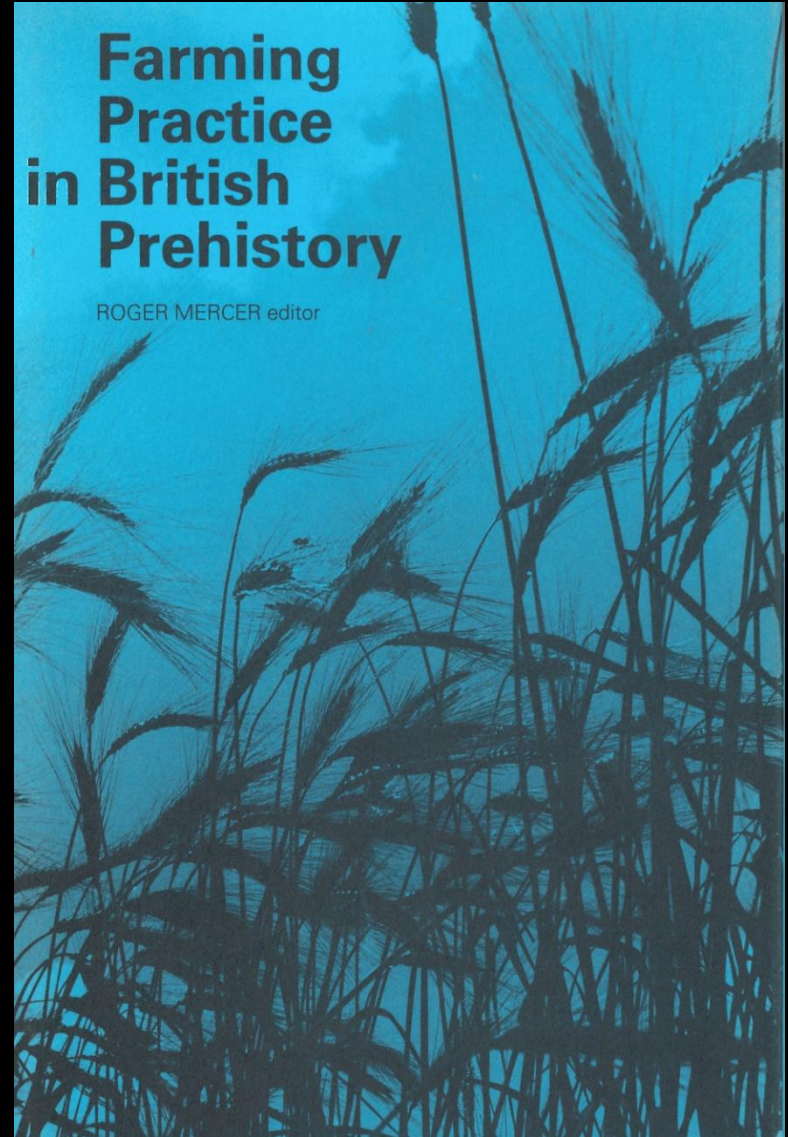
Sarunas Milisauskas

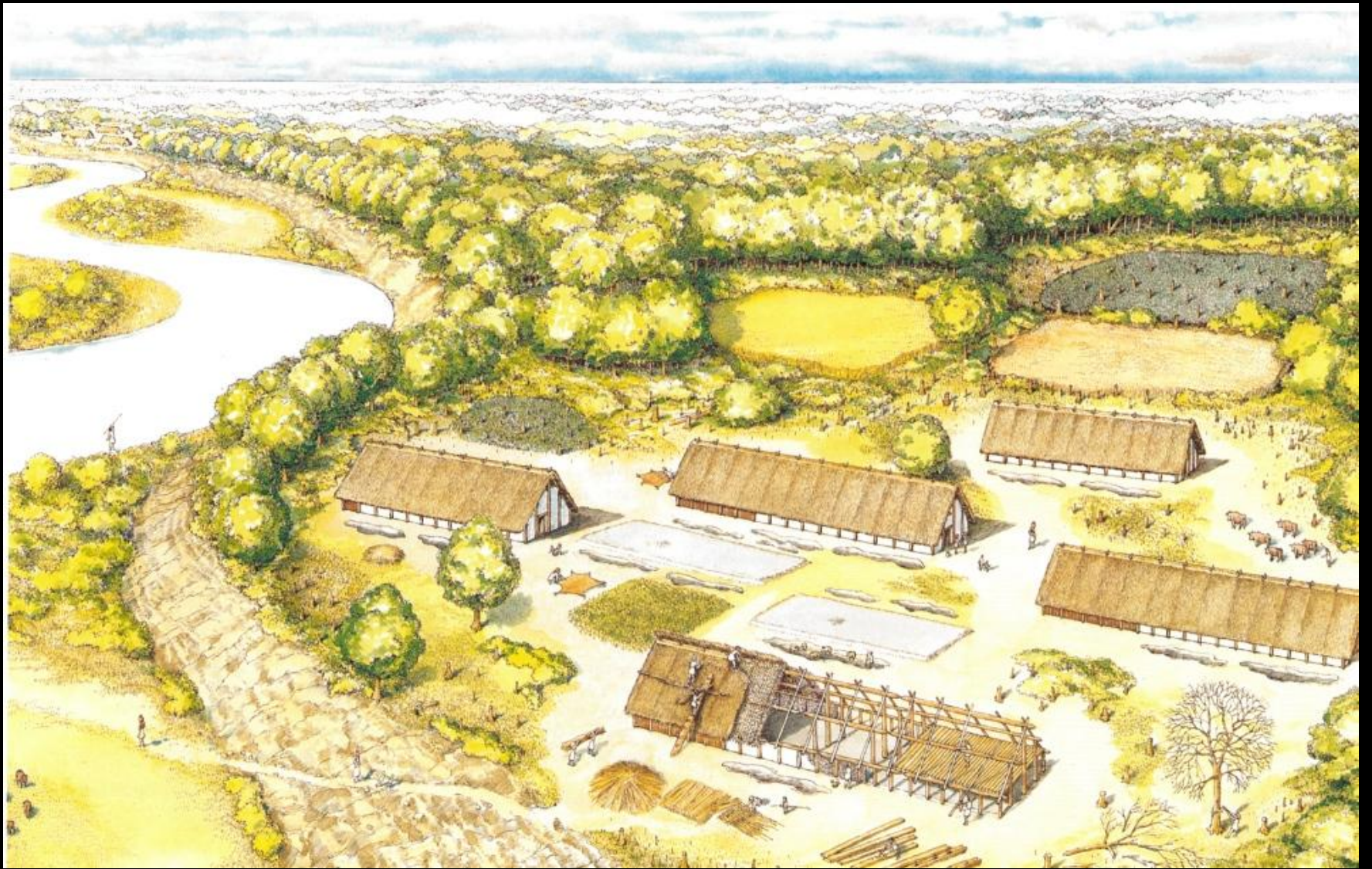
*European
Prehistory*

ACADEMIC PRESS, INC. *A Subsidiary of Harcourt Brace Jovanovich, Publishers*

**Farming
Practice
in British
Prehistory**

ROGER MERCER editor



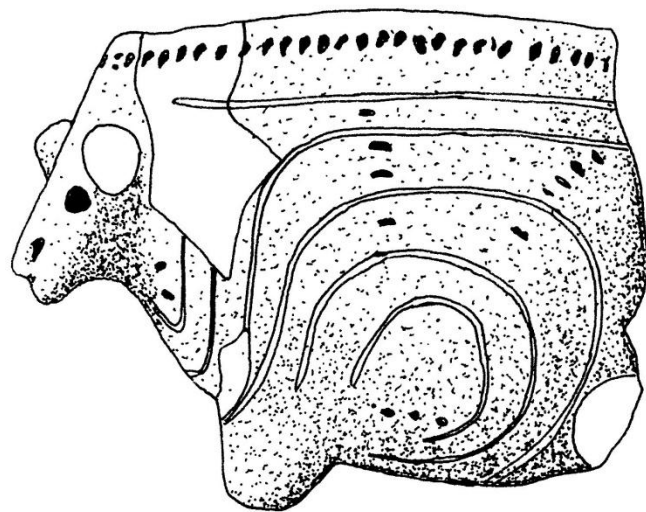
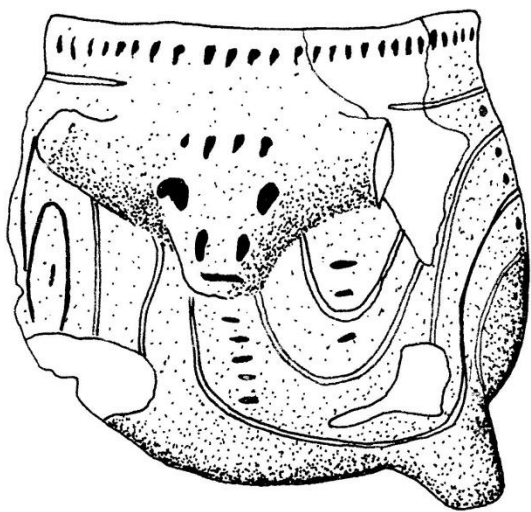




Alexander Fleming (Photo
by Alfred Eisenstaedt in
Life Magazine, January 14,
1952)



Early batch production of penicillin
(<http://images.wellcome.ac.uk>)



0 1 2 cm

WHY HUNT?

WHY GATHER?

JOIN THE NEOLITHIC REVOLUTION!



Special offer!
Free booklet!
The Pleasures of Porridge
Earn Your Animals' Respect
How to Tell a Weed

Your KEYS to a BETTER LIFE!

Harness Plant Power!

- Learn how the seeds you drop can become next fall's crop!
- Use seed selection to make future plants more productive and easier to harvest!
- Preserve and store surpluses for hard times!
- Invent new ways of preparing and cooking plant foods!

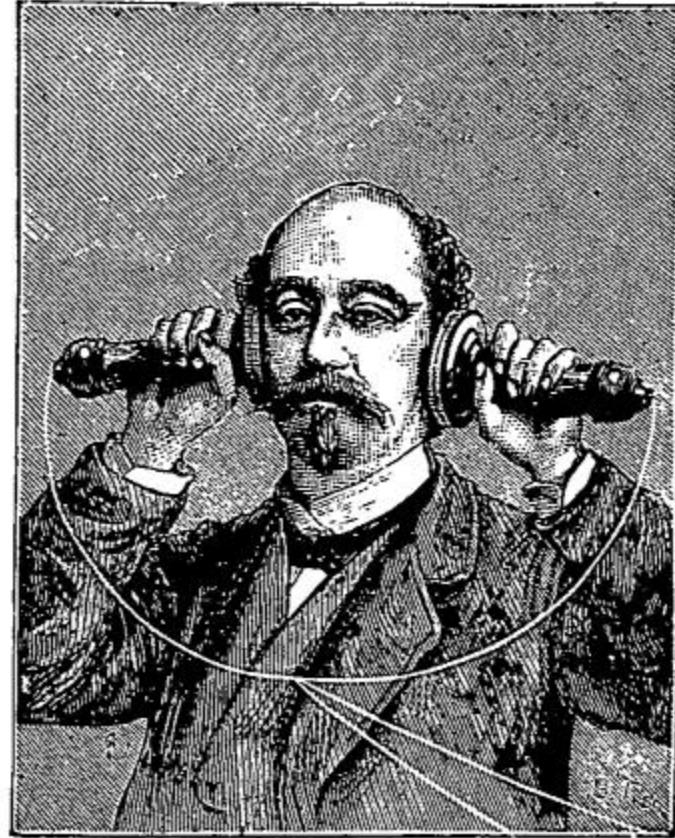
Put Animals To Work For You!

- Learn which species are slow and submissive!
- Use food and fences to keep them around!
- Influence their choice of mates!
- Breed the best and eat the rest!

Disclaimer: Plant and animal domestication can lead to overpopulation, deforestation, erosion, flooding, desertification, materialism, diminished nutrition, cavities, and television. Caution advised.
YOUR RESULTS MAY VARY



Personne parlant.



Personne écoutant.

LE TÉLÉPHONE.

The electric speech machine, a disruptive technology

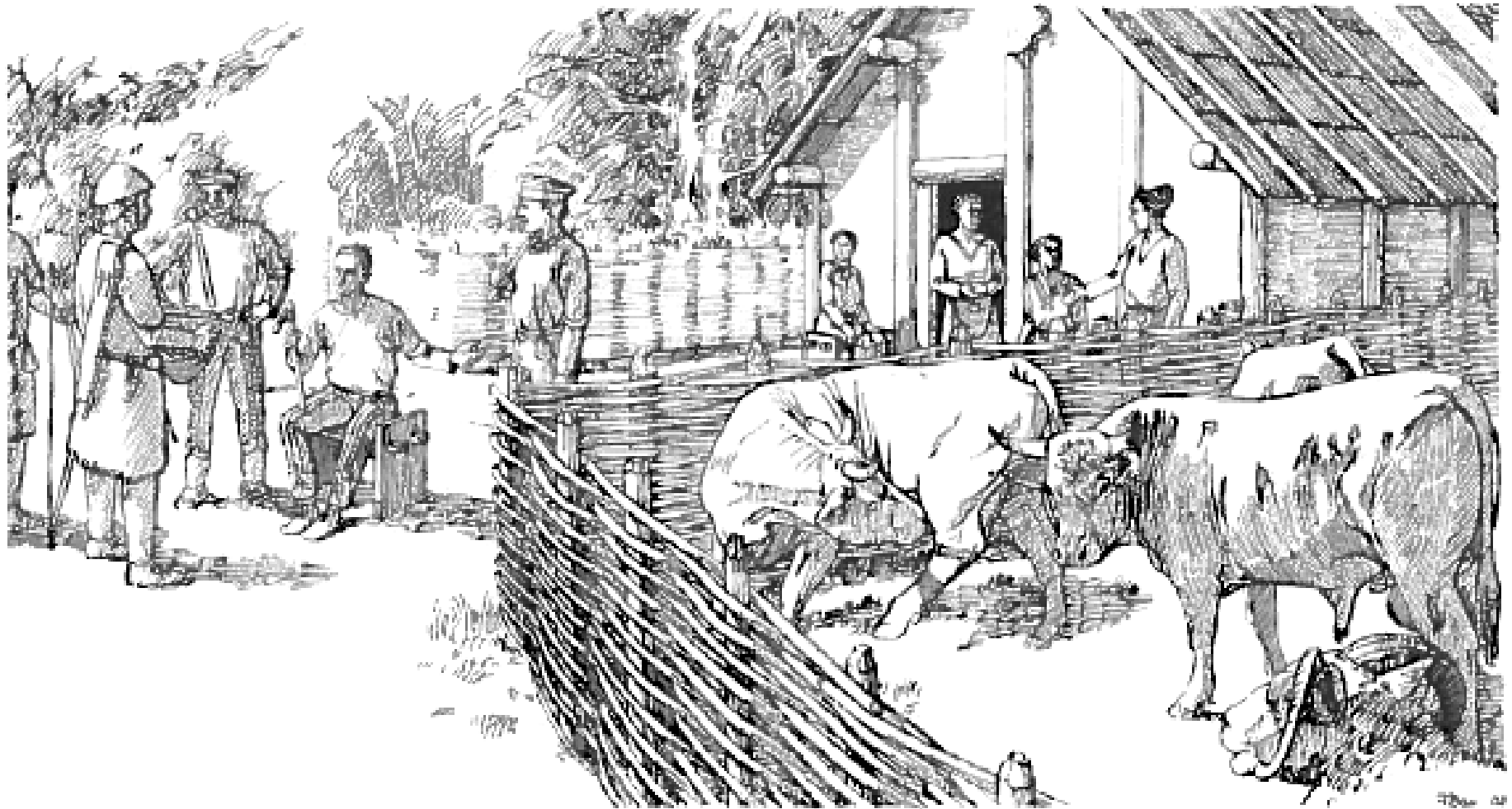
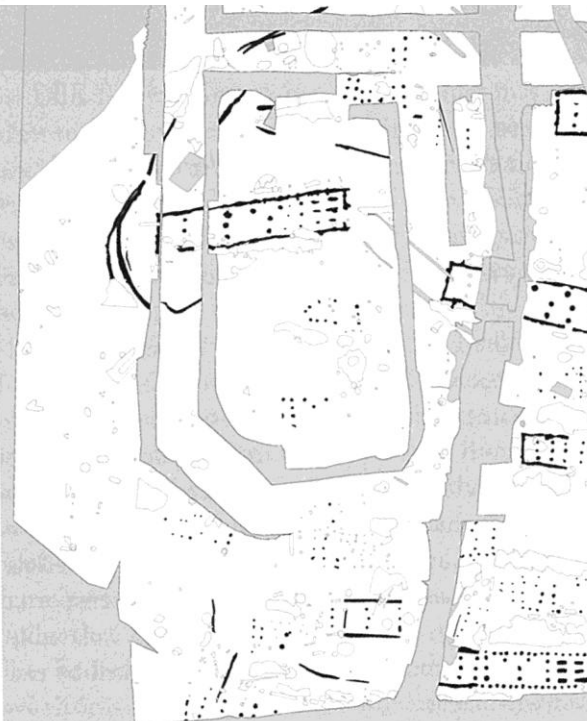
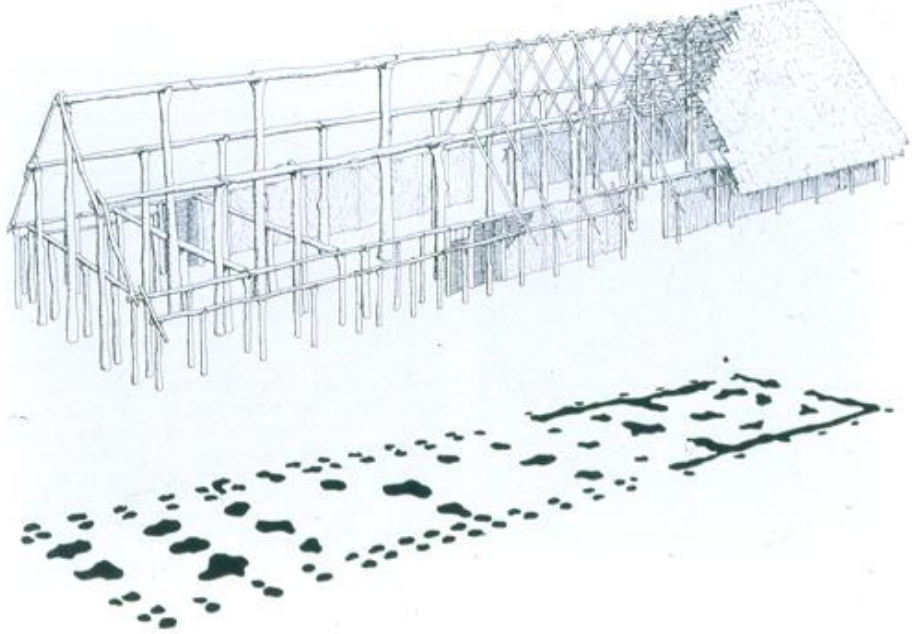


Abb. 7.1 La-Hoguette-Hirten übernehmen handkeramische Haustierte, um sie auf Sommergebirgsweiden zu treiben. Dieses Bild beeinflusste die Vorstellungen über die räumliche Organisation der handkeramischen Haustierhaltung stark (nach: Lüning 2002, Abb. 195a).

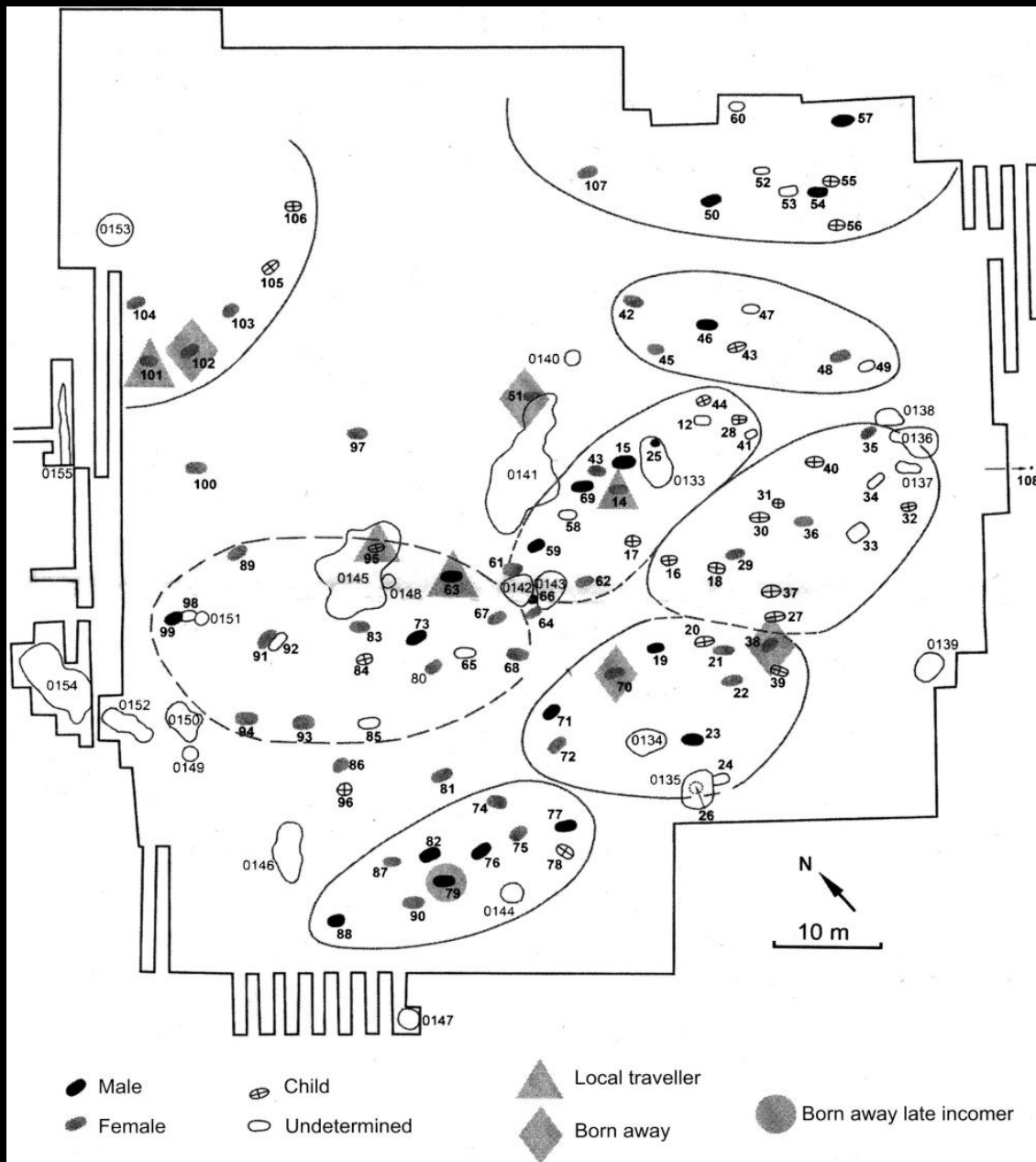
Outsourcing cattle herding to the foragers? Image and caption from Knipper 2011.



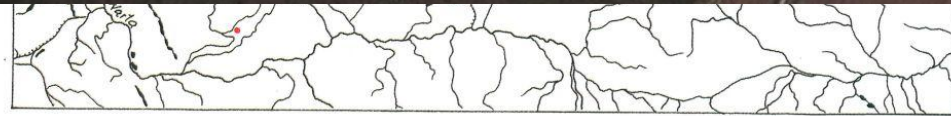
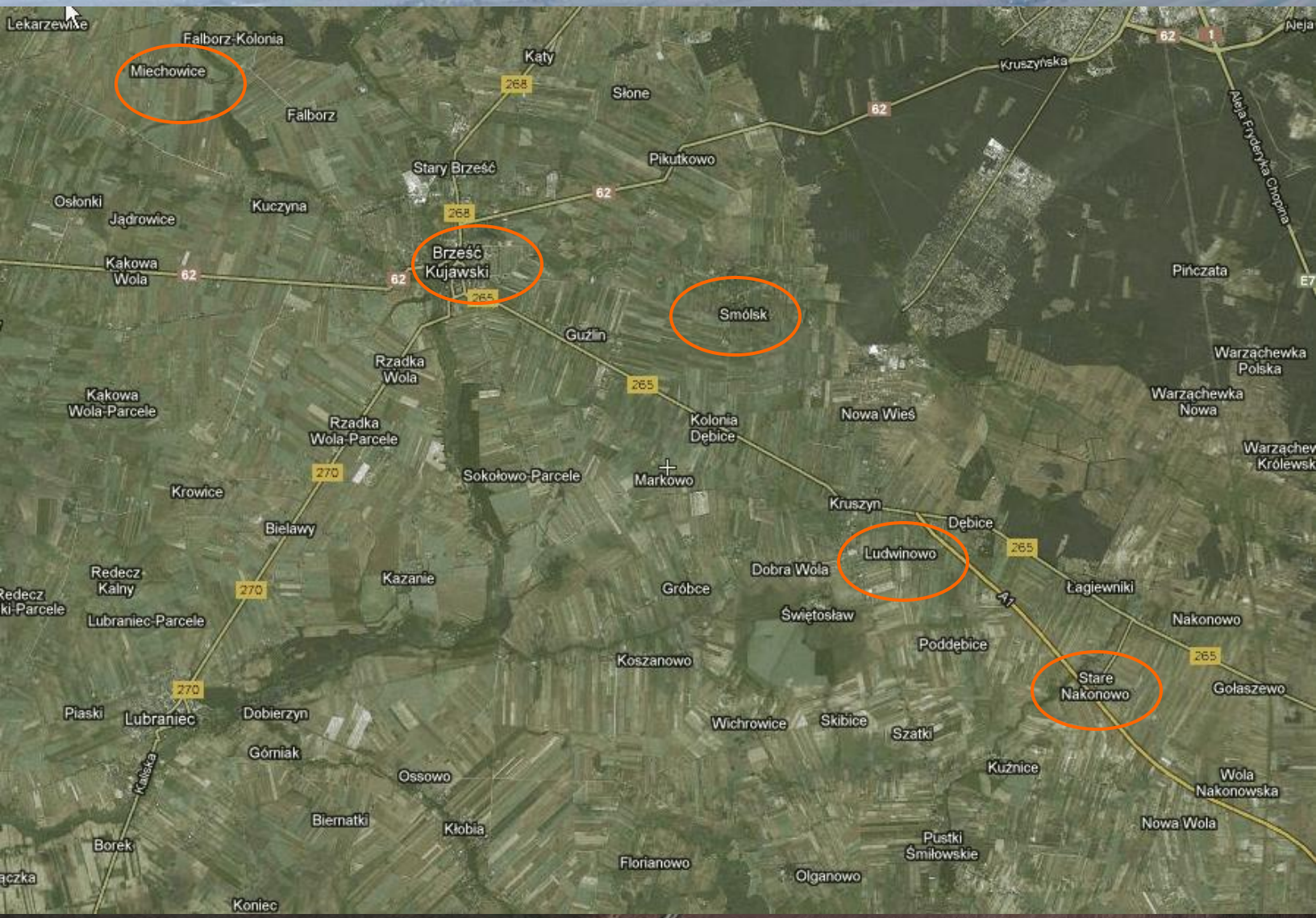


Vaihingen, SW Germany (photo courtesy of Landesamt für Denkmalpflege)

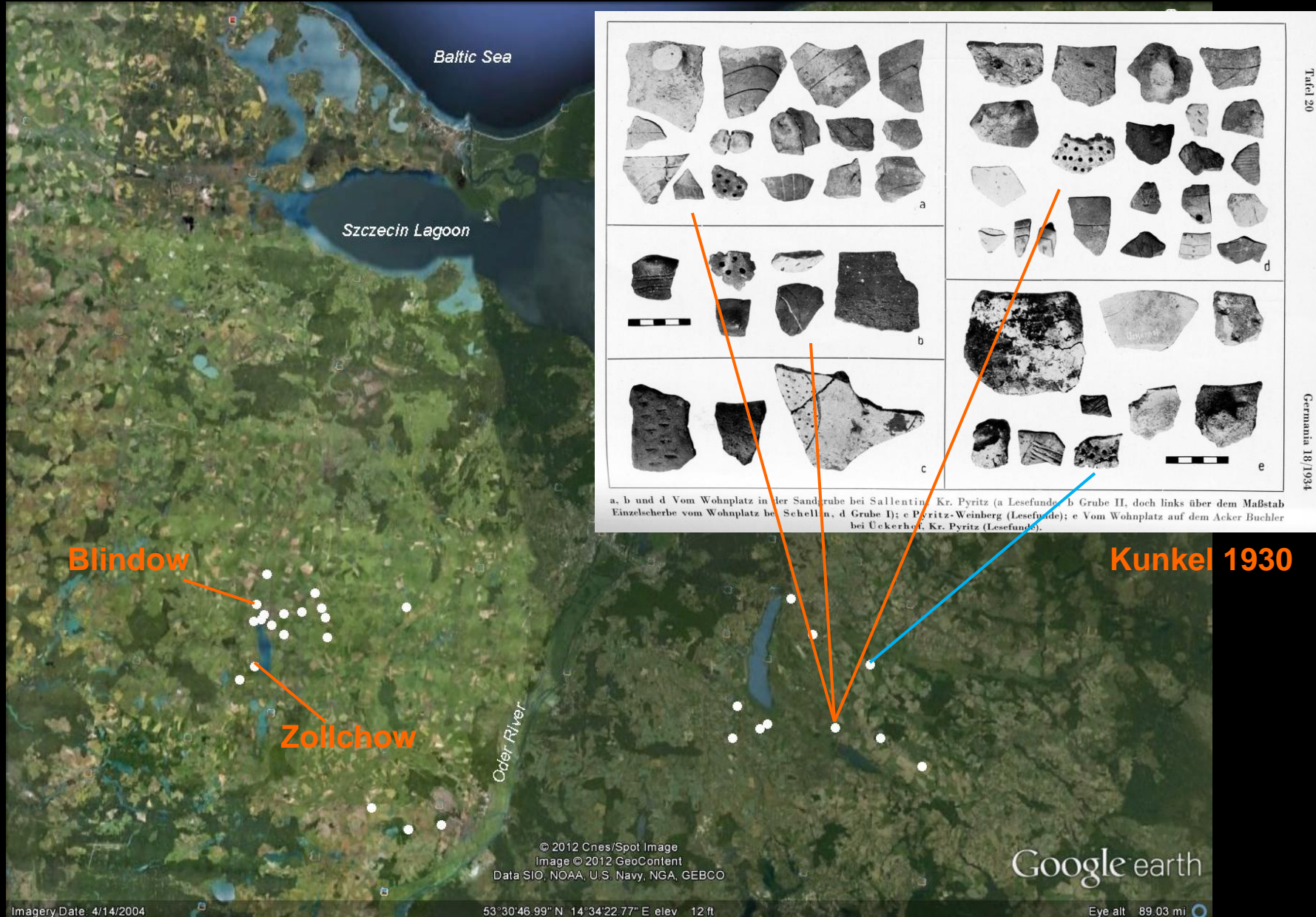
Cremation burials at Aleksandrowice, Poland (from Czekaj-Zastawny 2008)

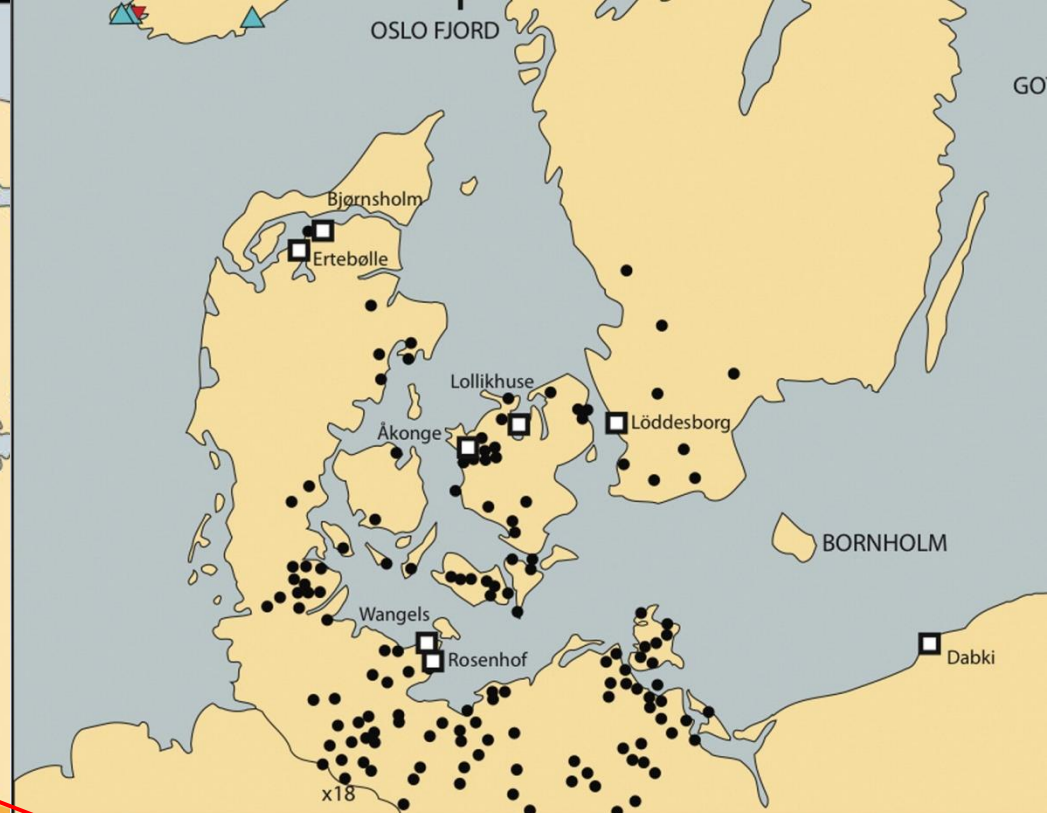
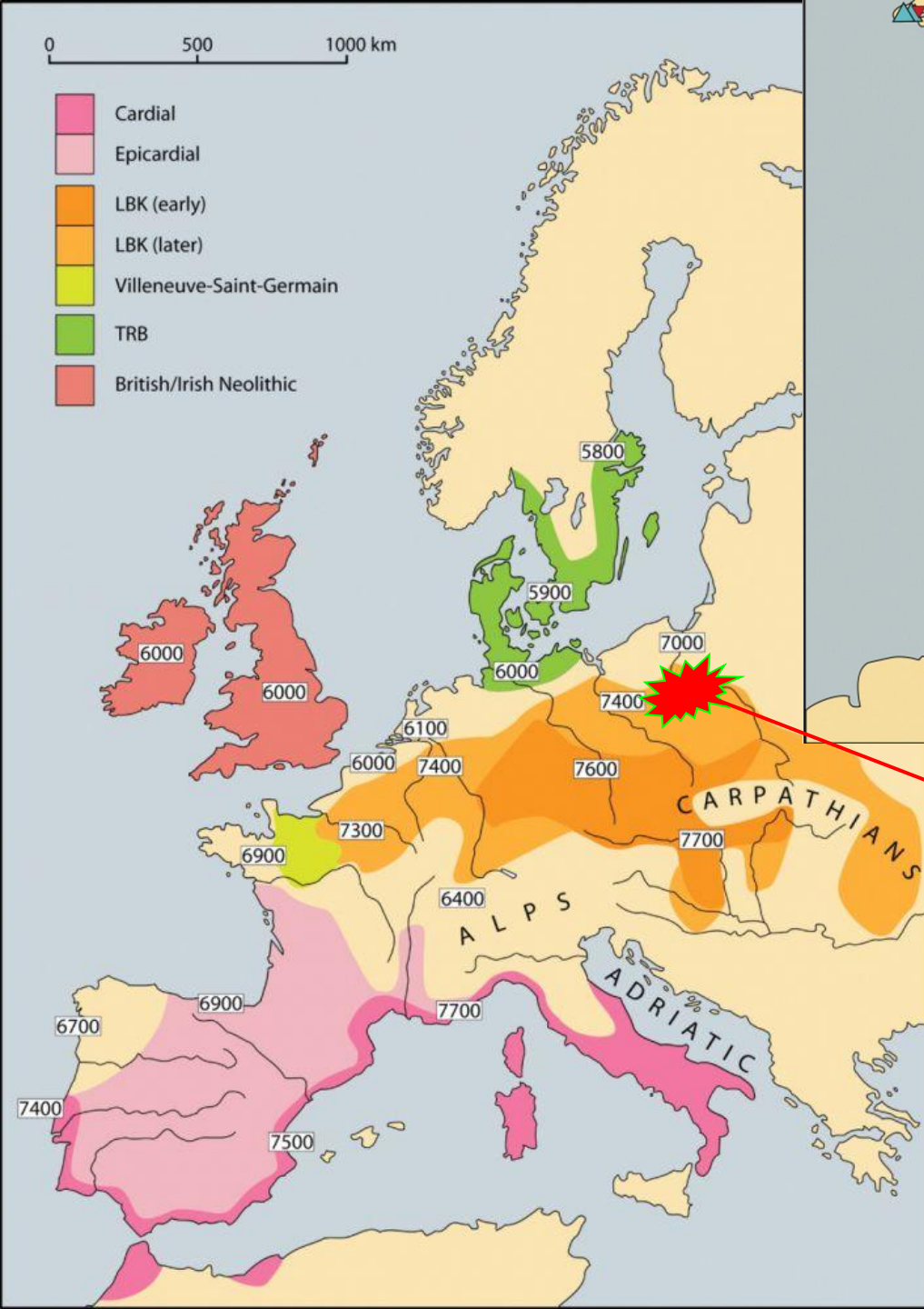


Biosocial groupings at Vedrovice, Bohemia (from Zvebil and Pettit 2012).



LBK sites along the lower Oder with sieves





Brześć Kujawski Group, 4700-4100 BC

Thank you for listening!



Linear Pottery from
Bozejewice (from
Czerniak 1998)

bogucki@princeton.edu